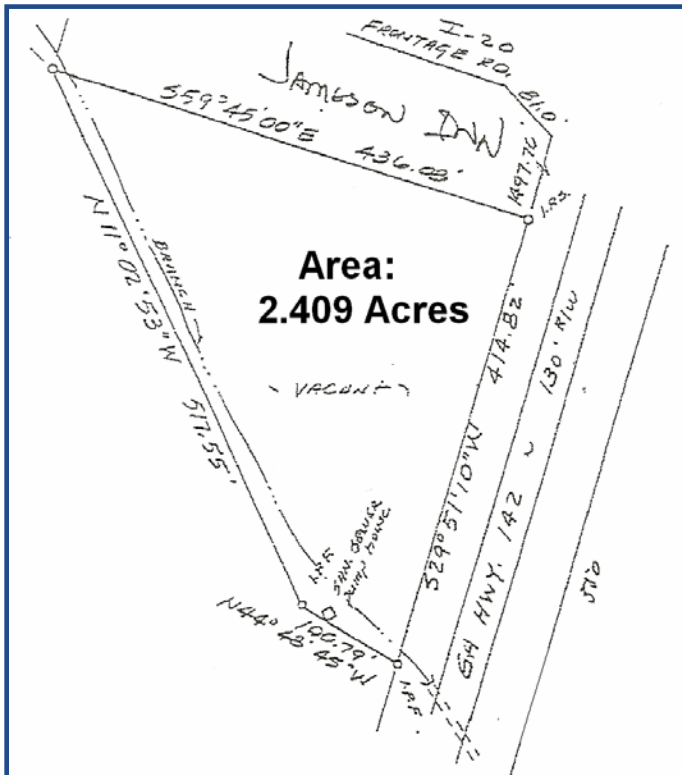


THE DRYMAN TEAM

COMMERCIAL REAL ESTATE



FOR SALE

2.4 ACRE COMMERCIAL SITE

Highway 142 and I-20 (Exit 93)
Covington, Georgia

- Located on New Four Lane Highway adjacent to New Super WalMart
- Zoned CM - Commercial Mix
- All Utilities to Graded Site
- Bank Owned - Priced to Sell



For more information contact:

404.832.5000

John Dryman
John@dryman.com